



## The mare.



## The nightmare.

The threat to the survival of these magnificent Suffolk Punch horses is all too real. There are *fewer than 100* breeding mares left in Britain.

There is no law on earth that protects them from extinction. There is no direct Government aid to support them.

Britain's gentle heavy horses are working breeds with little work left to do. They are standing on a time bomb.

Today, the only organisation striving exclusively to save such rare farm breeds is the Rare Breeds Survival Trust. And we rely wholly upon your goodwill and support.

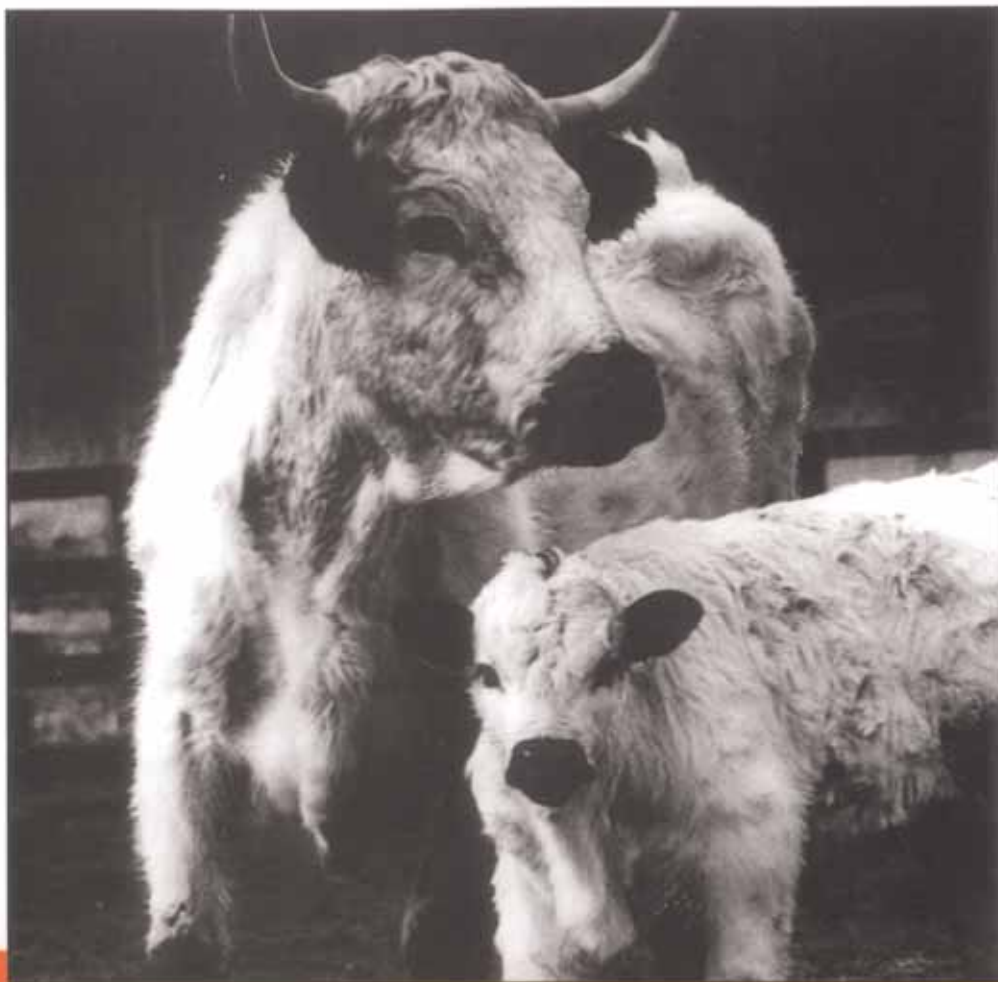
The Suffolk Punch is only one of over 50 endangered traditional species. The Clydesdale, the Cleveland Bay, many of our native ponies; Tamworth, British Lop, Middle White pigs; Castlemilk Moorit sheep; Irish Moiled and White Park cattle – these are just some of them. Already more than 20 national breeds have disappeared. Forever.

These breeds were our living heritage. Those that remain still are. And they need your help.

Last year, you gave over £25 million to save the earth's wild animals. Please, won't you give whatever you can now to save your country's very gentle ones?



Rare Breeds Survival Trust  
National Agricultural Centre  
Stoneleigh Park  
Warwickshire CV8 2LG.  
Telephone: 01203 696551.



**THE GOOD NEWS:**  
**Since 1973 their numbers have  
more than trebled.**

**THE BAD NEWS:**  
**That makes the total 400.**

Knighted "Sir Loin" by King James I, White Park cattle are probably the oldest breed in the country – and one of the rarest.

Because such beautiful animals are raised on farms, it's natural to assume they would have been cared for and sustained. Nothing could be further from the truth. Over time fashions changed and foreign breeds replaced valuable traditional ones. Along with over 60 historic farm breeds, the survival of White Park cattle was seriously endangered.

Thanks to the help of the Trust and dedicated breeders, the number of White Parks – though still pitifully small – is

growing. The fate of other rare British breeds is less secure, like Middle White pigs and Suffolk horses, two of 13 breeds with *total breeding populations under 200!*

When the world's wildlife is threatened, Governments step in. But there is no fund, nor any law on earth, to protect our own endangered farm breeds.

Yet they are our living heritage. And we are the only charity dedicated to preserving them. Won't you please give us your support?

Generations to come will thank you for it.

 BUTLER FUELS

Butler Fuels – helping to  
save White Park Cattle

  
**RARE BREEDS  
SURVIVAL TRUST**

Rare Breeds Survival Trust  
National Agricultural Centre  
Stoneleigh Park  
Warwickshire CV8 2LG.  
Telephone: 01203 696551.